



XC968EV

Lithium Phosphate (CATL)

Battery Class

270 kW

Rated power of the motor

19100 kg

Operating mass

3.2 m³ - 3.5 m³

Bucket Capacity



ELECTRIC LOADER

- The pure electric loader with zero-emission is the future of engineer machinery and the optimal choice for environmental protection.
- Based on the international research and development platform and integrated with global resources, XC968-EV pure electric loader is the new-generation loader of XCMG designed with international advanced technology and independent intellectual property right, featuring environmental protection, strong power, solidity and reliability, high efficiency, and energy conservation and easy maintenance, which is the environmentally friendly, energy-saving and efficient solution for multiple applications including construction sites, mines, ports, and roads, etc.
- The rated power is up to 280kW to supply stronger power to the machine, which is improved by more than 10% compared with that of the fuel loaders. The acceleration performance is also improved by more than 50% due to the quick response of the motor.



Head Office Gaya Makmur Putra

Jl. Lingkar Luar Barat No.3 Rawa Buaya - Cengkareng

Jakarta Barat - Indonesia 11740

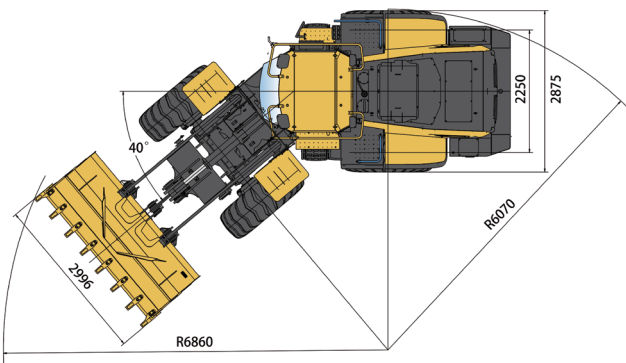
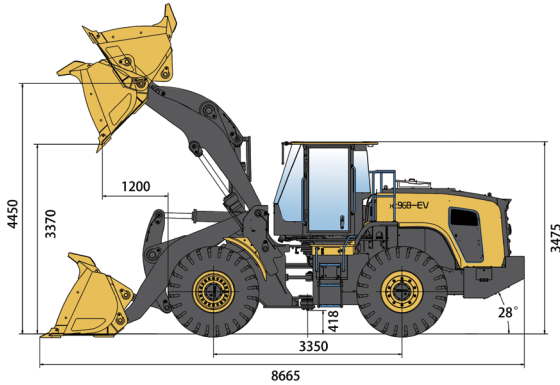
Telp : (62 21) 5828 799

Email : info@gmtractors.net

Website : www.gmtractors.net

SPECIFICATION

WHEEL LOADER XC968 EV



Main Specification

Rated load	6000 kg
Bucket capacity	3.2 m ³ - 3.5 m ³
Operating mass	19100 kg
Rated power of the motor	270 kW
Dumping height	3400 mm
Dumping distance	1200 mm
Wheelbase	3350 mm
Wheel tread	2250
Maximum traction force	170±5 kN
Maximum breakout force	174±5 kN
Total cycle time	≤9.7 s
gradeability	28°
Minimum turning radius (tire center)	5990 mm
Steering angle	38°
Overall machine dimensions (L×W×H)	8610×2996×3455 mm
Traveling speed	Forward I/II 18/36 km/h Reverse I/II 18/36 km/h

Main configuration	Description	Specification
Axle	Brand	XCMG
Working hydraulic system	Type	Double pump confluence
	Operating mode	Hydraulic joy-stick
Diversion hydraulic system	Type	Flow amplification
Brake system	Service brake	Hydraulic brake
	Parking brake	Hydraulic brake
Control system	System voltage	DC24V
Tyre	Size	23.5-25
Duration	General condition	6-7h
	Heavy condition	5-6h
Charging	300kW charging pile	55min
	Optional charging pile	240kW-360kW
Oil filling	Antifreeze	45L
	Axle oil (front/rear)	47L/26.5L
	Hydraulic oil	145L

Description	Specification
Battery class	LiFePO
Electric capacity	456 Ah
Stored power	282 kWh
Rated voltage	618 V
Protection level	IP67
Cooling way	Intelligence liquid temperature control
Rated power	2*100 kW
Protection level	IP67
Cooling type	Compulsory liquid temperature control
Ambient temperature	-40~55 °C
Altitude	≤4500 m
Rated power	70 kW
Protection level	IP67
Cooling type	Compulsory liquid temperature control
Ambient temperature	-40~+55 °C
Altitude	≤4500 m

THE SPECIFICATIONS ARE SUBJECT TO CHANGE WITHOUT NOTICE. THE PICTURES MAY INCLUDE OPTIONS. THE ACTUAL COLOR & APPEARANCE OF THE PRODUCT MAY DIFFER FROM WHAT IS SHOWN.

Networking

Jakarta | Semarang | Surabaya | Medan | Padang | Pekanbaru | Jambi | Palembang | Batam | Balikpapan | Banjarmasin | Makassar | Kendari | Manado
Samarinda | Pontianak | Sampit | Denpasar | Kupang